



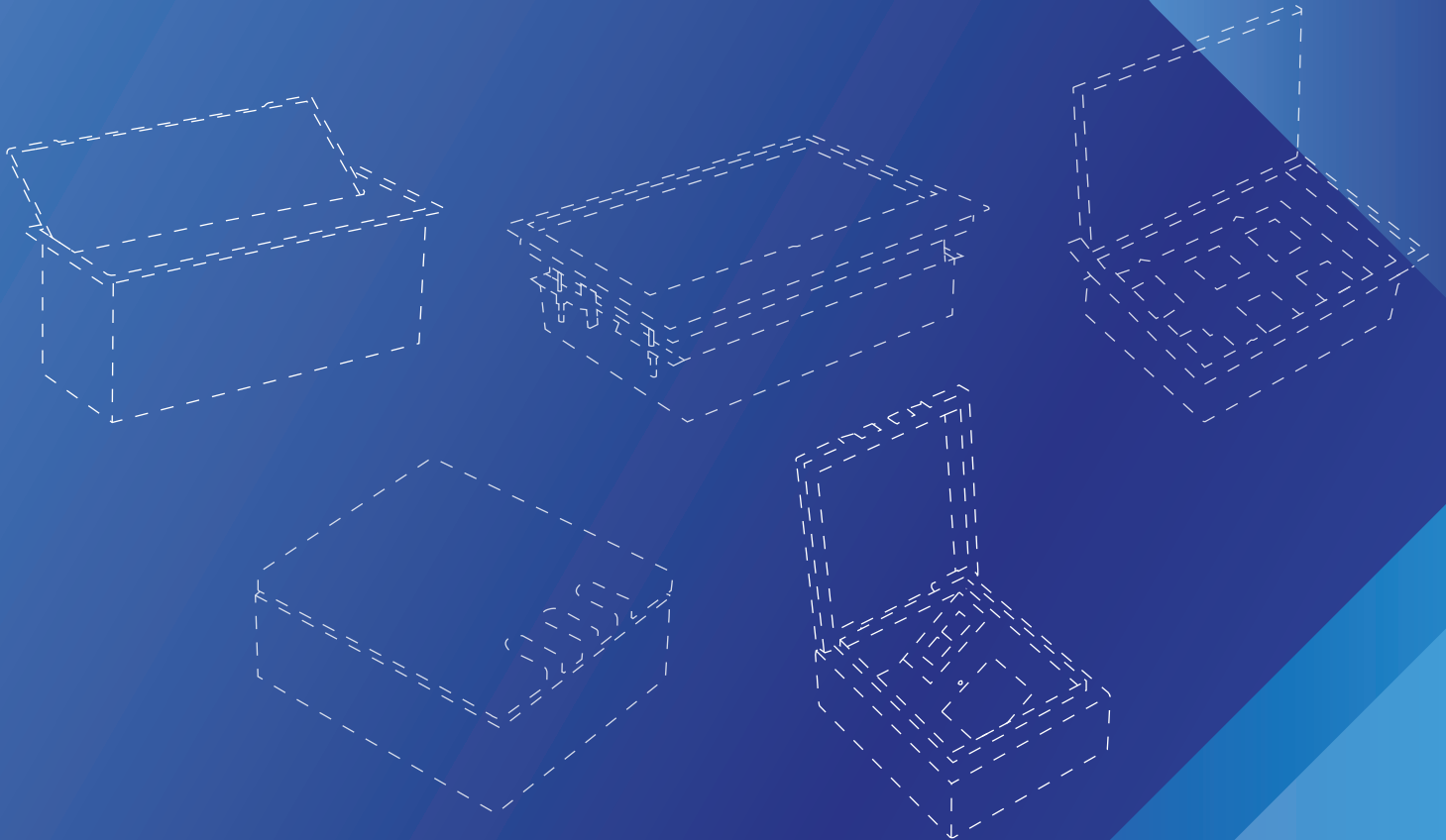
AXEL

CABLE MANAGERMENTS

OFFICE

CABLE MANAGERMENTS

THE BEST PLAN FOR YOUR WORKPLACE



www.cablemanagements.com

INTRODUCTION

AXEL CABLE MANAGEMENT SOLUTIONS

To meet all kinds of cabling requirements for wiring systems, AXEL offers a comprehensive range of steel cable management products; such as,

- Cable Trays
- Cable Ladders
- Cable Trunkings
- Floor Trunkings including accessories, covers & support systems.

All AXEL cable management products are designed and manufactured in Sri Lanka according to international standards to ensure that the customer receives complete product quality, safety, durability and value for money.

AXEL Cable Trays & Cable Ladders are tested in a UKAS accredited laboratory in the United Kingdom for Safe Work Load and Corrosion resistance.

AXEL OFFICE CABLE MANAGEMENT SOLUTIONS

Adhering to the modern conception of dynamic workspaces, AXEL continues bringing out the perfect solutions of cable management to suit any type of workspace.

AXEL's practice of opening innovative and adaptive compositions of modernized ideas has opened powerful new ways to implement both horizontal and vertical cable management solutions in modern workplaces.

AXEL Cable Management - Office Solution product range includes different types of cable management solutions such as,

- Table Mount Type Service box
- Floor Mount Type Service box
- Raised Floor Mount Type Service box
- Under Desk Horizontal Cable Management
- Power Pole

Customer satisfaction is of paramount importance to AXEL and we ensure that the highest standards of manufacture are maintained at all time!

TABLE MOUNT TYPE SERVICE BOX

Designed as a table top fixable socket with brushed flip-open cover. The brushed cover of desktop socket which is made of Stainless Steel or Electro Galvanized could be opened and flip closed.

Multi-functional configuration for power, data, voice, USB, Audio & Video, etc..

High quality finishing panel - silver or black is available for color selection.

Cables are concealed when in use and brush strip design gives provisions to carry cables out from the box and connect to devices.



**HIDDEN SOCKET INTO TABLE UNDERSIDE
TO KEEP DESKTOP SURFACE NEATER,
MODERN & SAVE MORE SPACE!**



Table mount type service box with flip open cover with brush strip to keep the cables organized and concealed away from active sight.

- Has provisions to accommodate 3 nos. of single BS plates along with 3 nos. of keystone modules.
- Made out of high quality Stainless Steel or electro galvanized sheet steel and has a powder coated finishing.
- Suitable for installation in Workstations / Meeting Rooms / Board Rooms / Classrooms / Study desk for home & hotel
- Size: 145 (W) x 130 (H) x 340 (L) mm
- Customized solutions are available on request. *(Subject to MOQ)*

FLOOR MOUNT TYPE SERVICE BOX

Comprehensive range of Floor Boxes offers a modern, practical way to attractively conceal electrical wiring devices in both residential and commercial applications, while still providing accessibility to power, network, audio/video & telecom connectivity when needed.

Featuring a sleek low profile and stylish high-precision stainless steel cover that recesses neatly into the floor when in use.

We make customizable floor boxes that leave a lasting impression within your infrastructure!



Single Outlet Box:
150 (L) x 175 (W) x 75 (H)



Dual Outlet Box:
250 (L) x 175 (W) x 75 (H)



Four way Outlet Box:
250 (L) x 250 (W) x 75 (H)



**ELEGANT & FASHIONABLE RECEPTACLE
AC COMADATING POWER, DATA, AV &
TELECOM CONNECTIVITY WHERE IT'S
NEEDED THE MOST!**



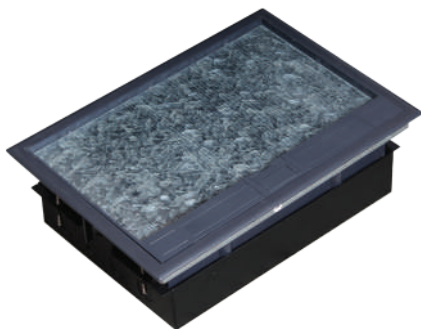
Low profile – Floor mount type service boxes provides a versatile solution for multiple outlets into a functional, aesthetic and cost effective box.

- Has provisions to accommodate 1-4 nos. of single BS plates along with 2-4 nos. of keystone modules.
- Stainless steel cover material with brush openings for cable protection.
- Base is fabricated from high quality electro galvanized sheet steel and has a powder coated finishing.
- Application: Concrete floor / Slab
- Customized solutions are available on request.
(Subject to MOQ)

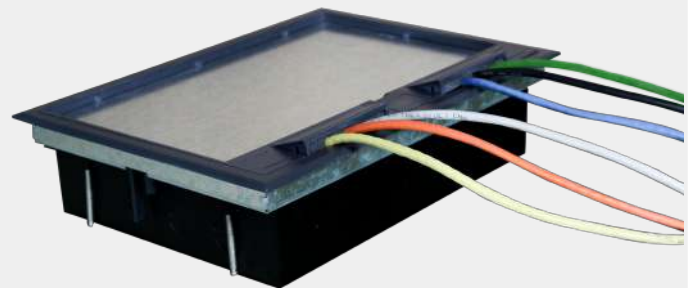
RAISED FLOOR MOUNT TYPE SERVICE BOX

Another modern solution to conceal electrical wiring components specially in raised floor environment.

Featuring an adjustable base box to level up the unit, reversible lid to ensure easy outgoing cable orientation, and recessed surface on top of the floor box cover to provide provision to install a floor covering material / carpet, offers the product a smooth and seamless look.



VERSATILE SOLUTION WITH LARGE CAPACITY FOR POWER, DATA AND MULTIMEDIA CONNECTIONS IN ONE BOX!



The perfect solution for an optimized interior design providing a versatile solution for projects that require functional, aesthetic and quality floor boxes for power, data and multimedia applications.

- Configured with max. 6 nos. of single BS plate capacity and comes complete with adjustable base box and clamp fixing mechanism which ensure quick and simple installation.
- The cover features a recessed flip-up handle to facilitate the access to box services and a retaining guard to reduce the risk of damage and protect cables while they are connected.
- Knockout holes at all four sides facilitate the wiring related works.
- Ideal for Server rooms & Modern office raised floor environment.
- Size: 330 (L) x 230 (W) x 75 (H)
(Height adjustable up to 100mm)
- Customized solutions are available on request.
(Subject to MOQ)

UNDER DESK HORIZONTAL CABLE MANAGEMENT

An easy horizontal cable management solution that is compatible with any workstation.

Its lightweight and ventilated tray stores power strips and cables neatly and off the floor and out of sight and make it easier to keep the work area clean and tidy.

Super sturdy and extra durable steel construction with a powder coat finish.

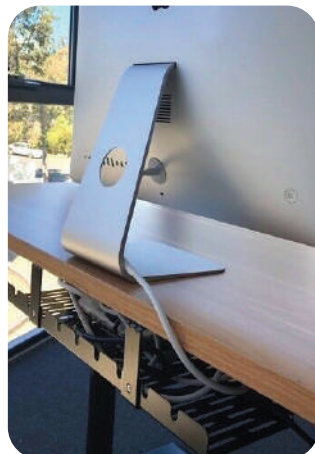
Unique design allows various methods of easy installation (under the desk, on the wall, etc.).



Before



After



**SAY GOODBYE TO FRUSTATING
CABLE CLUTTER!**



A cluttered work space results in a disorganized mind, and the in-the-office or at-home Under Desk Horizontal Cable Management is here to help get them together.

- Keep the pesky computer cables in one place for a neater appearance and streamlined feel.
- Includes 2 nos. of mounting brackets.
- Easy installation under the table.
- Durable steel construction with a powder coat finish.
- Size: 125 (W) x 90 (H) x 500 (L) mm.
- Customized solutions are available on request.
(Subject to MOQ)

POWER POLES

A modern and unique vertical floor to ceiling planning approach that reimagines the connection between overhead cable path and floor cable path.

AXEL's power poles are manufactured from strong and lightweight steel & powder coated. They provide an easy, attractive and economical way to effectively distribute power & telecommunications to work areas from open ceiling spaces.

Power poles are easily installed & come complete with ceiling mount & floor mount brackets.

Typical applications would be, office workstations, classrooms, retail outlets or factory floors.

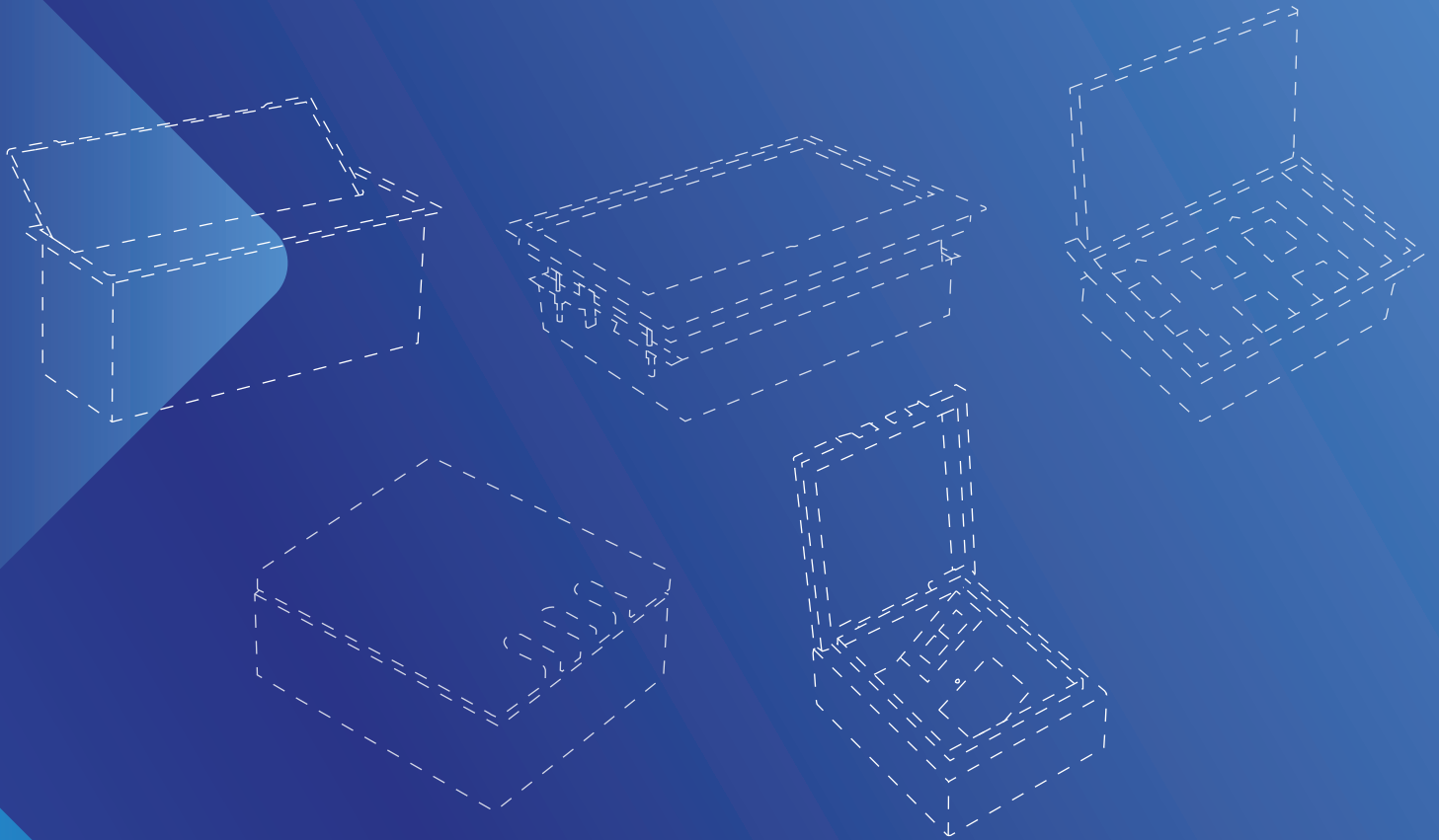


FLOOR-TO-CEILING POST, DELIVERS CONVENIENT ACCESS TO POWER & DATA!



- Provides an easy, attractive and economical way to effectively distribute telecommunication and power to work areas from open ceiling spaces.
- AXEL can also customize power pole by supplying outlet cut outs to your height requirements. This will increase the speed of your installation as no cutting is needed on site.

THE BEST PLAN FOR YOUR WORKPLACE



AXEL
CABLE MANAGERMENTS

AXEL CABLE MANAGERMENTS



Corporate Office

No: 163/26,
Nawala Road,
Colombo 05,
Sri Lanka.

Production Plant

No: 416/5,
Leyland Road,
Panagoda, Homagama,
Sri Lanka.

Tel: +94 11 2 50 50 90

Email: sales@cablemanagements.com

Web: www.cablemanagements.com

Follow us on  facebook.com/AxelCablemanagement

All Illustrations, drawing and descriptive matter in this publication are of a generally informative nature only and do not form part of the specification or description of the goods.

All dimensions shown are nominal. AXEL reserves the right to make, without notice, such modifications in specifications, design, materials or finishes as it copyright, intellectual property and drawings remain the property of AXEL and must not be reproduced, without prior approval.

© AXEL CAT - 11/2022



www.cablemanagements.com