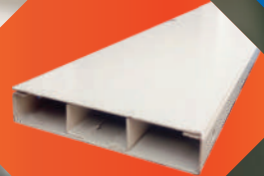


# CABLE MANAGERMENTS

Cable Trays | Cable Ladders | Cable Trunkings | Floor Trunkings



# INTRODUCTION

AXEL is a well-renowned brand of steel cable management products in the industry. AXEL cable management products are designed & manufactured with the latest technology backed by continuous research and development and it enables us to deliver a quality product to the world market.

AXEL's product range includes,

**01. Cable Trays & Accessories**

**02. Cable Ladders & Accessories**

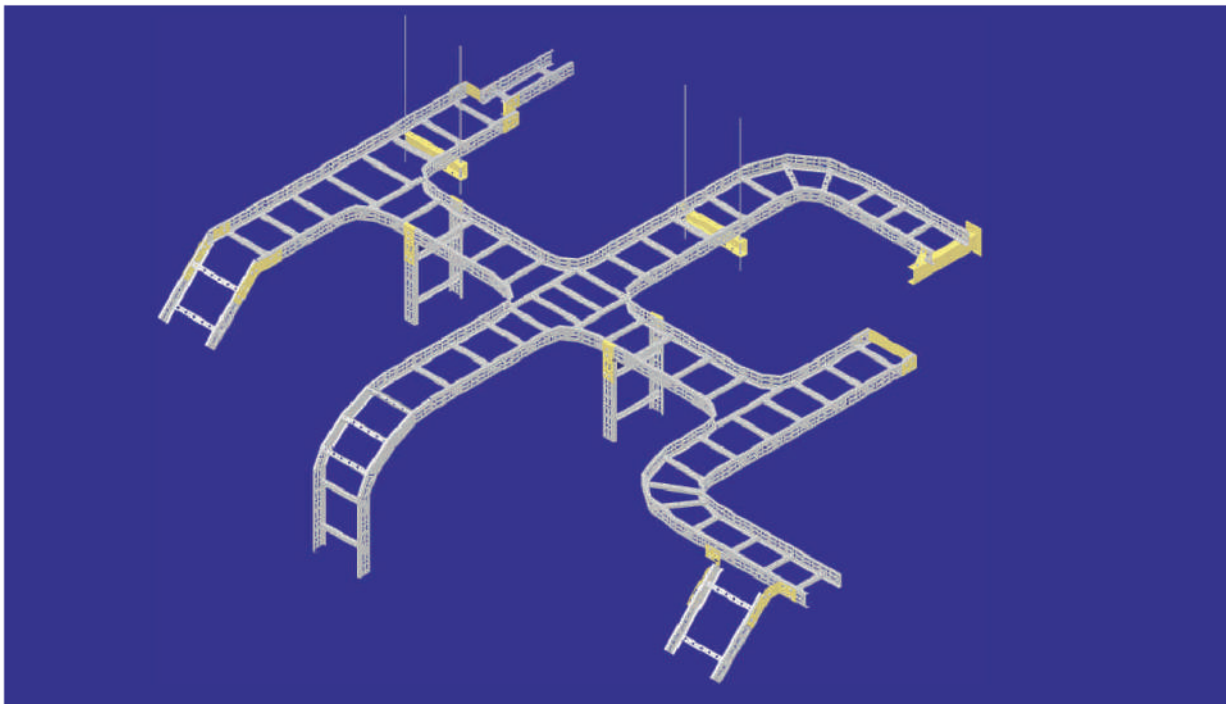
**03. Cable Trunkings & Accessories**

**04. Floor Trunkings & Accessories**

AXEL Cable Management products are manufactured according to international standards and tested at a UKAS accredited Laboratory for its performance. AXEL cable management products include a vast range of sizes and different types of materials & finishes to match different type of site requirements.

AXEL is a technologically advanced, independently tested, high quality and user-friendly cable management system to suit any application in the industry.

AXEL products have an embossed AXEL logo and/or QR code sticker on all its items, including accessories, support systems, and covers. This will help to easily identify the product and protect customers from counterfeit products.

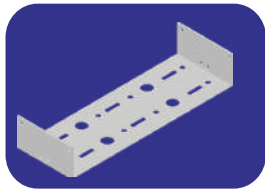
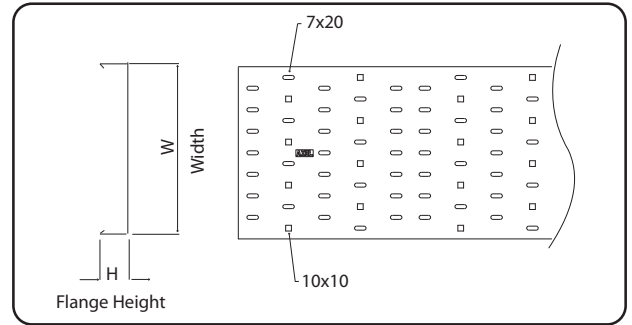
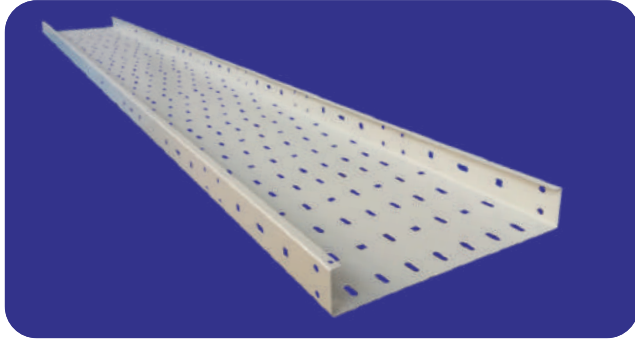


# CABLE TRAYS - STD SERIES

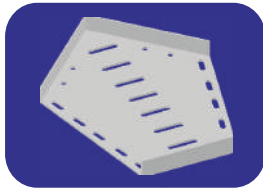
AXEL STD Series Cable Trays are manufactured to the highest standards, offering time-saving and adaptable designs, practical slot patterns, and versatile accessories to simplify site installations.

A vast range of STD Series Cable Trays and accessories help to match the exact requirements of the installation. The continuous perforation of the entire system, including accessories, supports to maintain proper airflow to the cables.

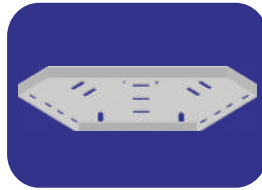
AXEL Cable Tray System Conforms to the BS EN 61532 - 2002 international standards.



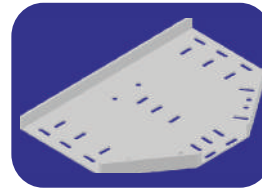
Coupler



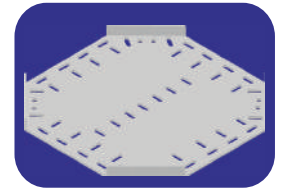
45° Flat Bend



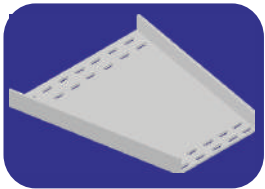
90° Flat Bend



Flat Equal Tee



Flat 4Way Equal Intersection



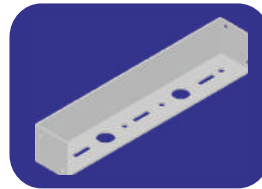
Reducer



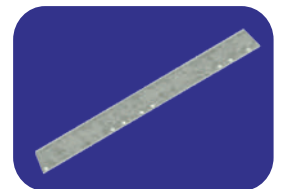
90° External Riser Bend



90° Internal Riser Bend



Stop End



Divider Fillet

## Materials and Finishes

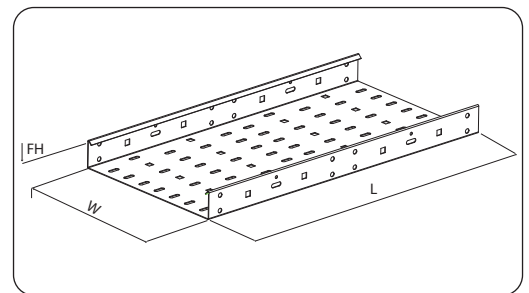
EG Epoxy polyester powder coated to RAL 7032 (Textured) as standard.

HDGA Epoxy polyester powder coated to RAL 9006 as standard.

Aluminum Alloy Unpainted or Painted.

## Available sizes

Flange Height (FH) mm	25	50	75	50 E				
Width (W) mm	100	150	225	300	450	600	750	900
Length (L) m	2.4							



## Material Thickness

Flange Height (FH) mm	25			50				75			50 E				
Width (W) mm	100	225	450	100	225	450	750	100	300	450	100	225	450	750	
	150	300	600	150	300	600	900	150	225	600	750	900	150	300	600
Thickness of Trays (mm)	1.0	1.2	1.5	1.0	1.2	1.5	2.0	1.2	1.5	2.0	0.8	1.0	1.2	1.5	
Thickness of Accessories (mm)	1.5														

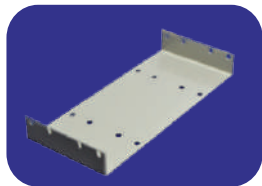
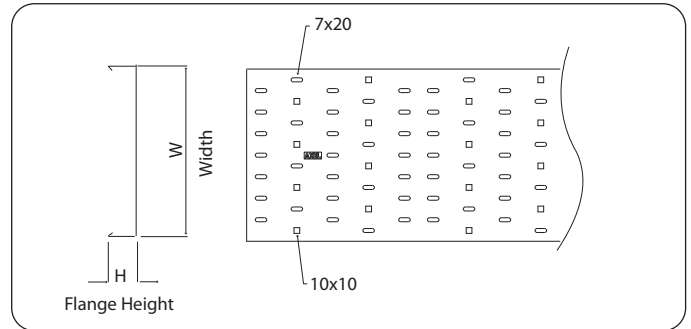
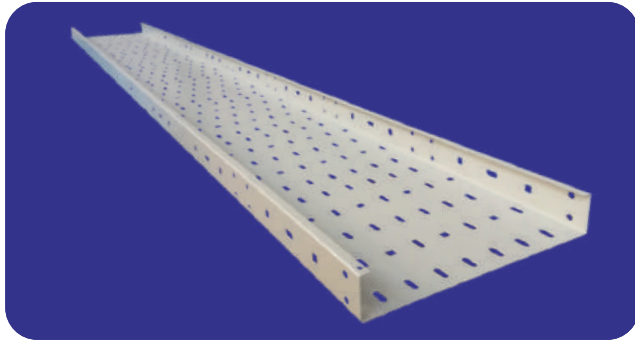
\* Any other materials, finishes and sizes are available on request. Subject to MOQ

# CABLE TRAYS - X SERIES

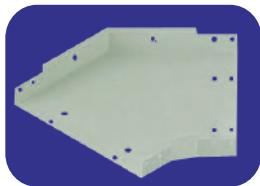
AXEL X-Series Cable Trays are manufactured to international standards, offering time-saving and adaptable designs, practical slot patterns, and versatile accessories to simplify the installation.

The AXEL X-Series Cable Trays are designed to be manufactured in the shortest amount of time and also with the least amount of raw material waste. This allows for the best price in the market without compromising the final product's quality.

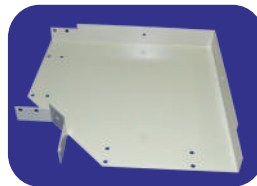
AXEL Cable Tray System conforms to BS EN 61532 : 2002 international standard.



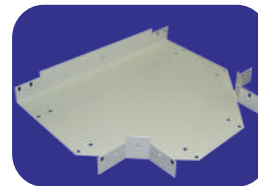
Coupler



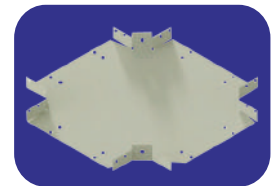
45 Flat Bend



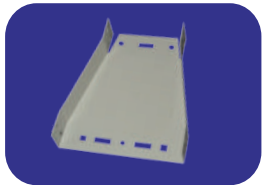
90 Flat Bend



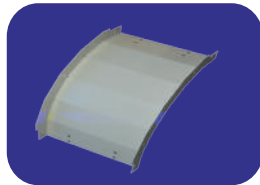
Flat Equal Tee



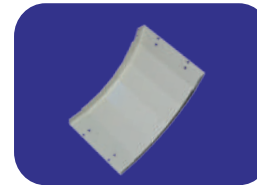
Flat 4Way Equal Intersection



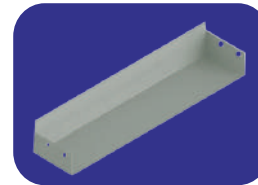
Reducer



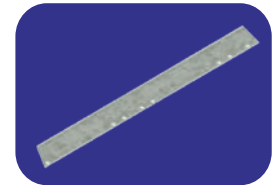
90 External Riser Bend



90 Internal Riser Bend



Stop End



Divider Fillet

## Materials and Finishes

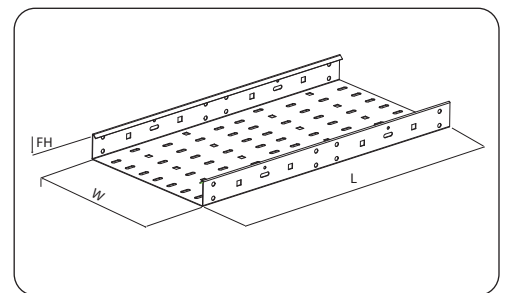
EG Epoxy polyester powder coated to RAL 7032 (Textured) as standard.

HDGA Epoxy polyester powder coated to RAL 9006 as standard.

Aluminum Alloy Unpainted or Painted.

## Available sizes

Flange Height (FH) mm	50						75			
Width (W) mm	100	200	300	400	500	600	150	300	450	600
Length (L) m	2.4									



## Material Thickness

Flange Height (FH) mm	50						75			
Width (W) mm	100	200	300	400	500	600	150	300	450	600
Thickness of Trays (mm)	1.0	1.0	1.0	1.5	1.5	1.5	1.2	1.2	1.5	1.5
Thickness of Accessories (mm)	1.5									

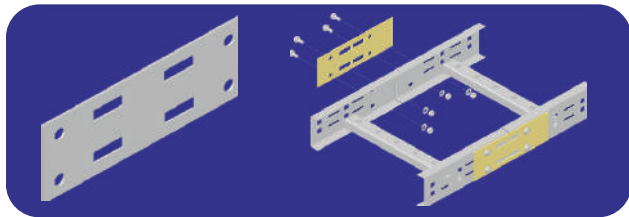
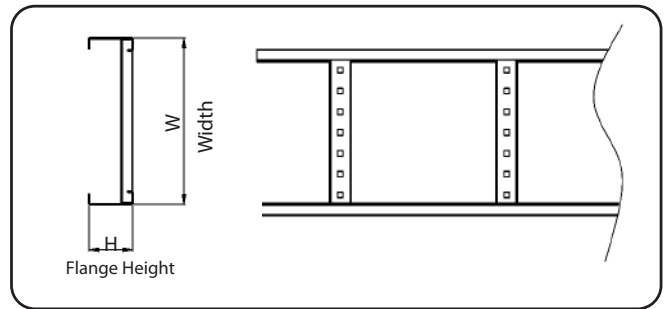
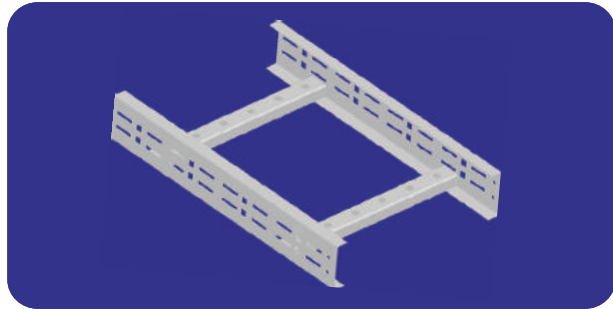
\* Any other materials, finishes and sizes are available on request. Subject to MOQ



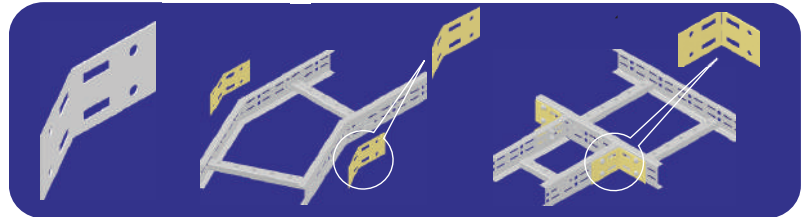
# CABLE LADDERS

The AXEL cable ladder system represents a major technological advance in its design, providing faster and easier installation, greater cable fill capacity, total flexibility based on shallow channel profiles and the rungs for cable fixing options, a unique coupler system, and a comprehensive range of accessories for flexible mounting and installation.

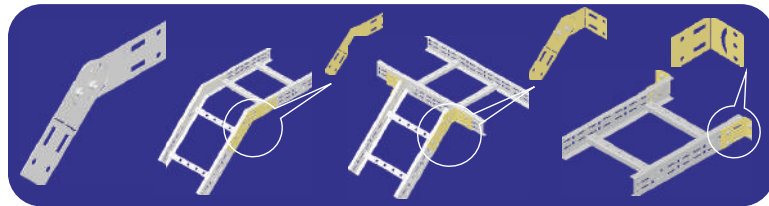
AXEL Cable Ladder System Conforms to the BS EN 61537 - 2002 international standards.



Straight Coupler



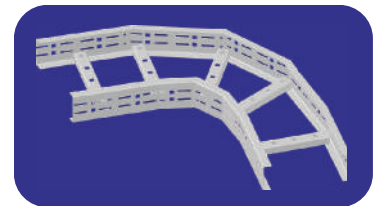
Horizontal Adjustable Coupler



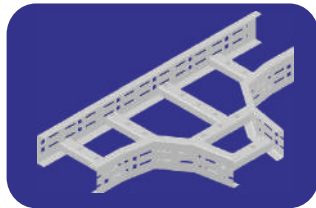
Vertical Adjustable Coupler



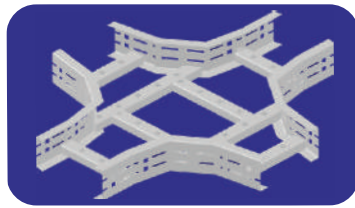
45° Flat Bend



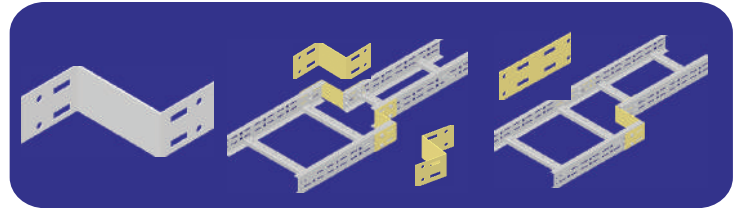
90° Flat Bend



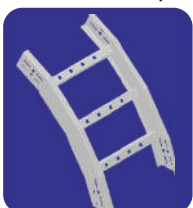
Flat Equal Tee



Flat 4Way Intersection



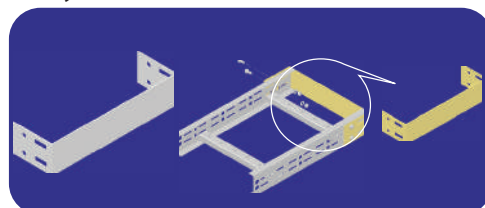
Reducer



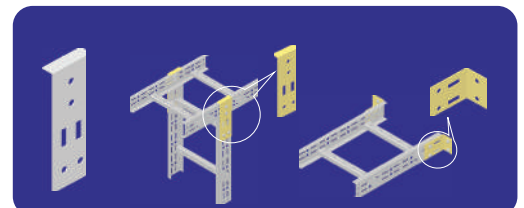
90° External Riser Bend



90° Internal Riser Bend



Stop End



Drop Out Bracket

## Materials and Finishes

EG Epoxy polyester powder coated to RAL 7032 (Textured) as standard.

HDGA Epoxy polyester powder coated to RAL 9006 as standard.

Aluminum Alloy Unpainted or Painted.

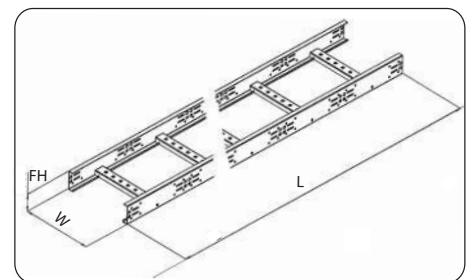
## Available sizes

Flange Height (FH) mm	75					
Width (W) mm	150	300	450	600	750	900
Length (L) m	2.4					

## Material Thickness

Flange Height (FH) mm	75					
Width (W) mm	150	300	450	600	750	900
Thickness of Ladders (mm)	1.5	1.5	2.0	2.0	2.0	2.0
Thickness of Accessories (mm)	1.5	1.5	1.5 or 2.0	2.0	2.0	2.0

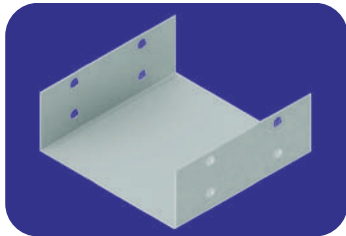
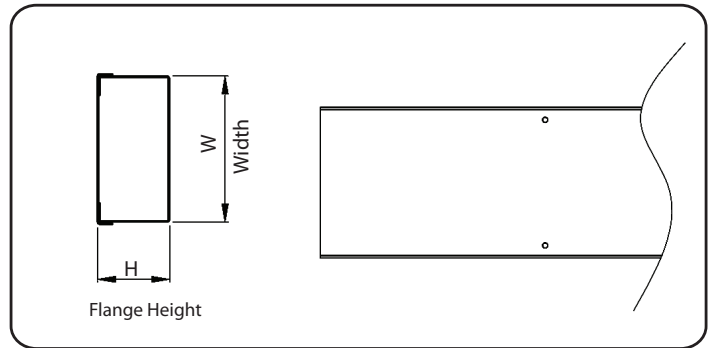
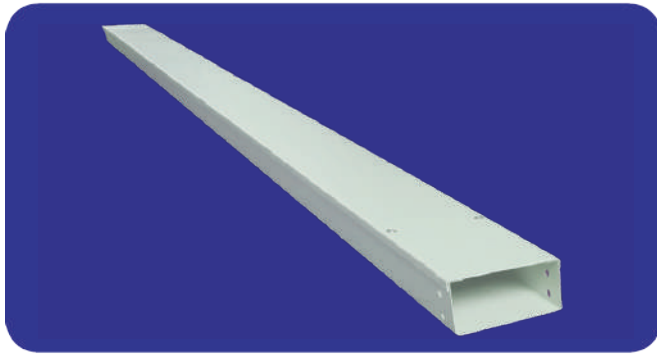
\* Any other materials, finishes and sizes are available on request. Subject to MOQ



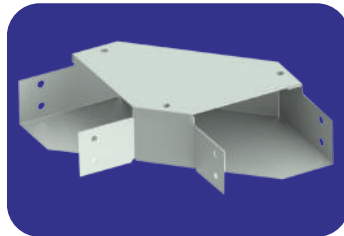
# CABLE TRUNKINGS

Cable Trunkings and accessories are available in a wide variety and are designed to accommodate the demands of many cable installations.

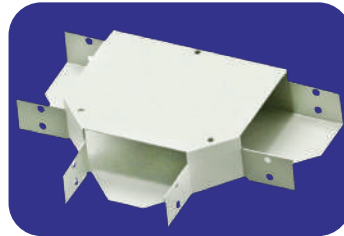
AXEL Cable Trunking System conforms to BS EN 61532 - 2002 international standards.



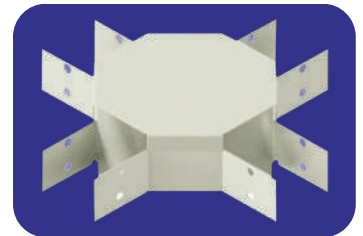
Coupler



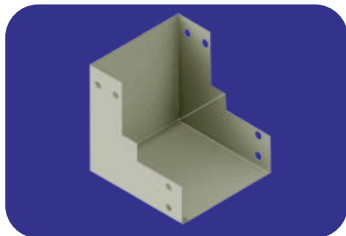
Flat Angle



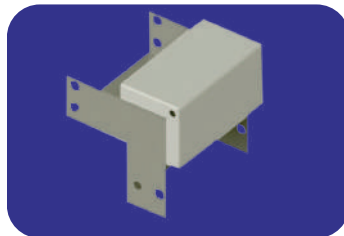
Flat Tee



Flat 4 way Intersection



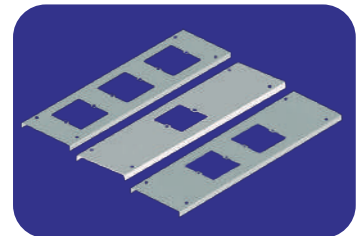
External Angle



Internal Angle



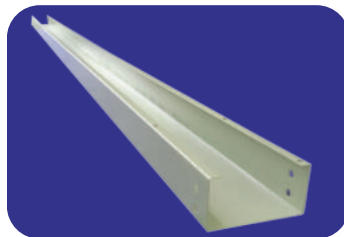
Stop End



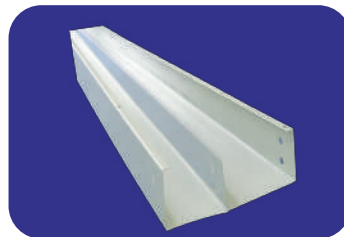
Socket Lids



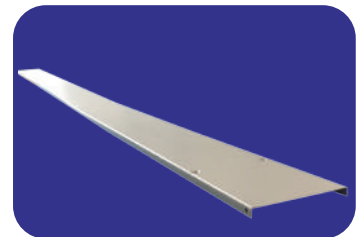
Cable Trunking Hanger Support



Cable Trunking Base



Compartment Cable Trunking Base



Cable Trunking LID

## Materials and Finishes

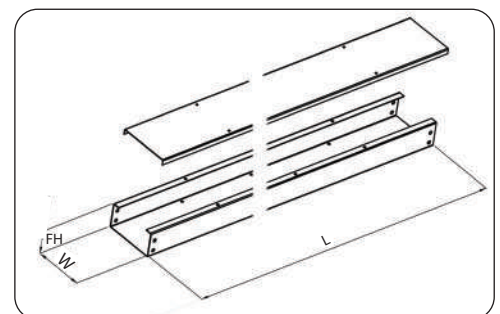
EG Epoxy polyester powder coated to RAL 7032 (Textured) as standard.

HDGA Epoxy polyester powder coated to RAL 9006 as standard.

Aluminum Alloy Unpainted or Painted.

## Available sizes

Flange Height (FH) mm	50			100
Width (W) mm	50	75	100	100
Length (L) m	2.4			



## Material Thickness

Flange Height (FH) mm	50				100				50 E				100 E			
Width (W) mm	50	75	100	100	50	75	100	100	50	75	100	100	50	75	100	100
Thickness of Trunkings (mm)	0.8	0.8	0.8	0.8	0.6	0.6	0.6	0.6	0.6	0.6	0.6	0.6	0.6	0.6	0.6	0.6
Thickness of Accessories (mm)	1.0								1.0							

\* Any other materials, finishes and sizes are available on request. Subject to MOQ

# FLOOR TRUNKINGS

AXEL offers a greater choice for floor distribution systems, suited for different applications.

## Under Floor Trunking System

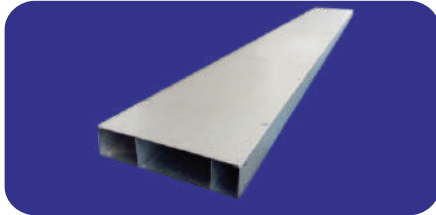
This range offers in-screed systems available with steel trunkings, which meets the most demanding power, telecommunication and data cable management requirements.

## Flush Floor Trunking System

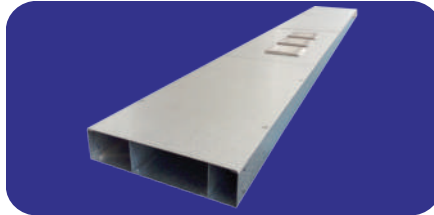
This system offers the benefit of easy access for cable installation or re-routing. The removable top load bearing panel is designed to lie flush with the floor surface, within the screed.

## Raised Floor Trunking System

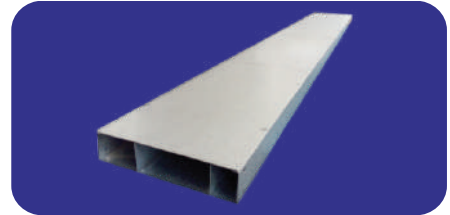
A comprehensive range of service outlet boxes, junction boxes, trunking and accessories for use in raised or 'cavity' floor installations.



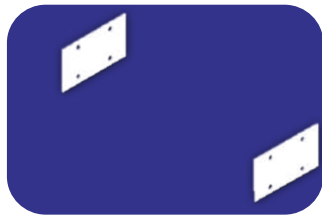
Under Floor Trunking



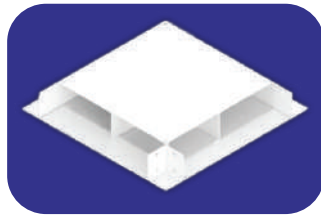
Flush Floor Trunking



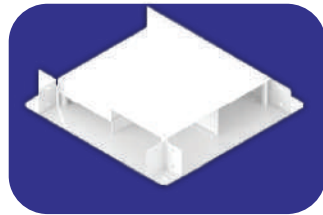
Raised Floor Trunking



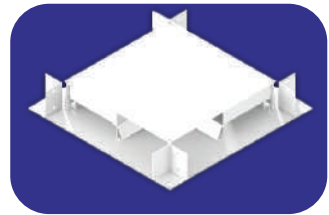
Coupler



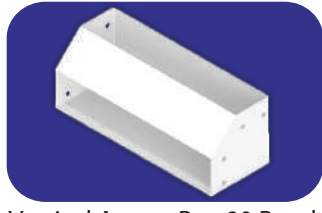
Junction Box 90 Bend



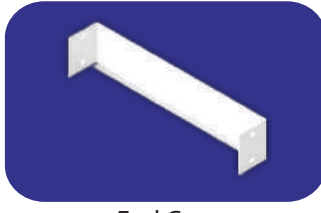
Junction box - Tee



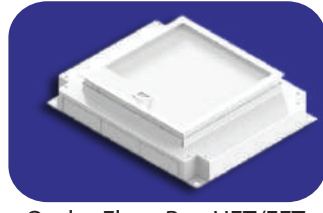
Junction box - Cross



Vertical Access Box 90 Bend



End Cap

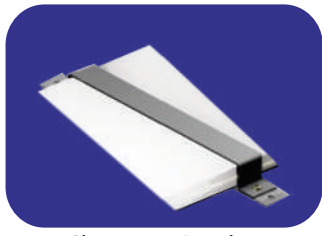


Outlet Floor Box UFT/FFT

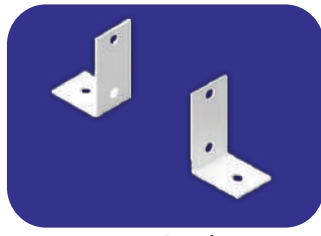


Reducer

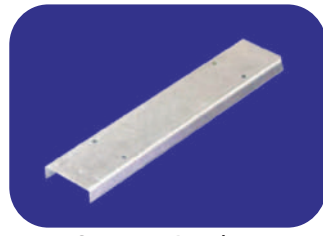
## Mounting Accessories



Clamping Bracket



Fixing Bracket



Support Bracket  
fixed Height



Support Bracket  
Adjustable Height

## Materials and Finishes

Al/Zn Unpainted or Painted.

EG Epoxy polyester powder coated to RAL 7032 (Textured) as standard.

HDGA Epoxy polyester powder coated to RAL 9006 as standard.

Stainless steel.

Aluminum Alloy Unpainted or Painted.

## Available sizes

	Under Floor Trunking				Flush Floor Trunking				Raised Floor Trunking						
Flange Height (FH) mm	25 38				25 65				38						
Width (W) mm	1 comp	50	75	100	150	100	150	75	100	150	225				
	2 comp	150	225	300	375	450	100	150	225	300	400				
	3 comp	150	225	300	375	450	150	225	300	400	150	225	300	375	450
	4 comp	375	450								375	450			
Length (L) m	2.4														

## Material Thickness

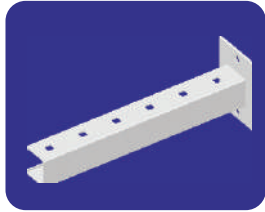
Trunking Base 1.0mm -1.5mm	Trunking Lid 1.0mm - 2.0mm	Accessories 1.0mm - 2.0mm
----------------------------	----------------------------	---------------------------

\* Any other materials, finishes and sizes are available on request. Subject to MOQ

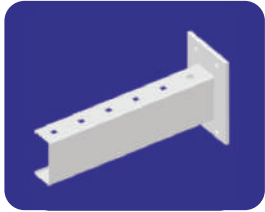
# SUPPORT SYSTEM

The AXEL Support system is manufactured to the BS 6949 standard, including a range of supports and accessories to comply with AXEL Cable Trays and Ladders.

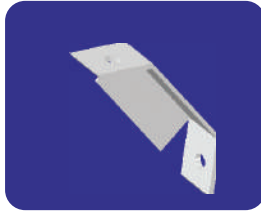
## Cantilever Support and Accessories



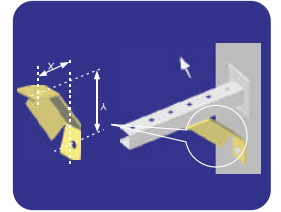
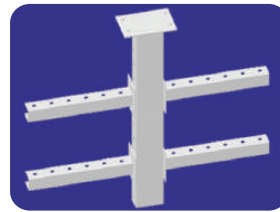
Cantilever Support  
35x40mm  
cross section for  
General Duty  
Applications



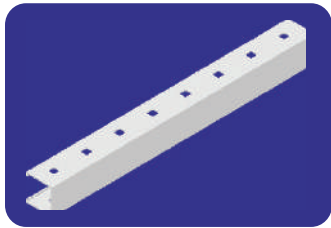
Cantilever Support  
35x80mm  
cross section for  
Heavy Duty  
Applications



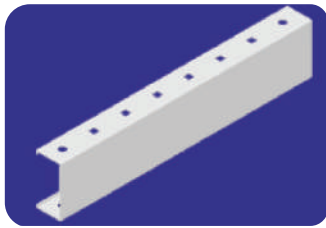
Cantilever Arm Prop



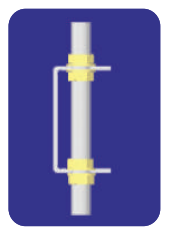
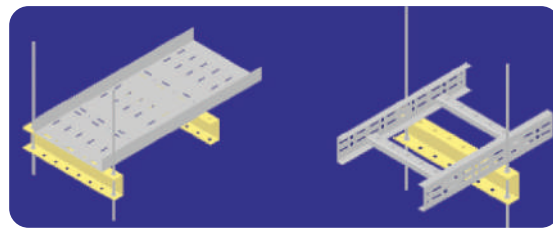
## Hanger Support and Accessories



Hanger Support  
35x40mm  
cross section for  
General Duty  
Applications

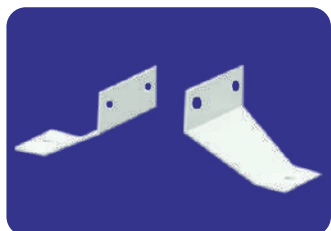


Hanger Support  
35x80mm  
cross section for  
Heavy Duty  
Applications



Hanger supports are hanged by M10 threaded rod. The hanger support has an extra width of 40mm rather than a cable tray or ladder with a 10mm hole to take M10 treaded rod.

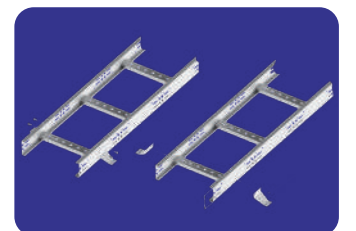
Holes on the cantilever support & hanger support can be used to bolt cable trays & ladders on to it. In case of holes on cantilever support or hanger support is not coincide with holes on cable ladder rung, ladder fixing brackets can be used. Holes on the cantilver support & hanger support can use to fix, data cable pipes, fiber optics cable pipes, compressed air pipes, water pipes, air conditioner pipes, gas pipes, lamps, signs, etc.



Cable Ladder Fixing Bracket



Cable Ladder Elevated  
Fixing Bracket

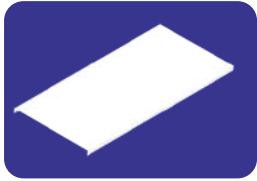




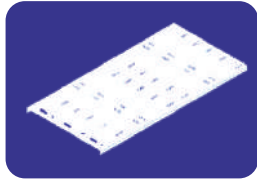
# COVERS

AXEL offers a wide variety of Cable Trays & Ladder Covers to provide protection for the cables run on the Cable Tray or Ladder from sunlight, environmental elements, dirt, debris and falling objects etc. The range includes straight covers and accessory covers in different types to ensure the Continuity of the system.

## Straight Covers



Plain Cover



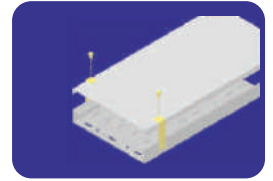
Ventilated Cover



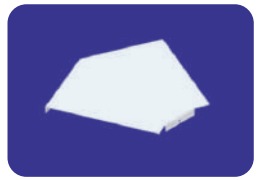
Canopy Type Cover



Elevated Cover Bracket



## Accessory Covers



45 Flat Bend Cover



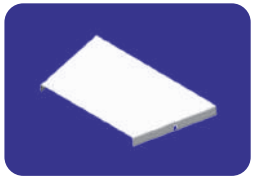
90 Flat Bend Cover



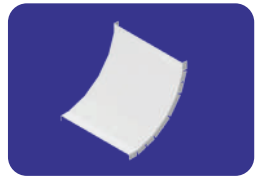
Flat Equal Tee Cover



4 Way Equal Intersection Cover



Reducer Cover



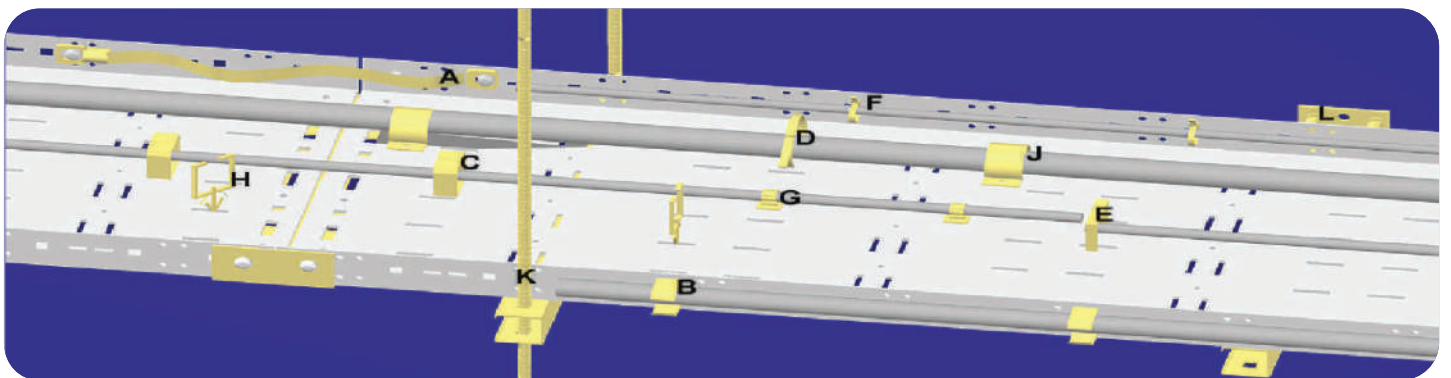
Internal 90 Riser Bend Cover



External 90 Riser Bend cover

AXEL Cable Tray or Ladder covers are available in different materials and finished to match with the cable tray and ladder system.

# GENERAL ACCESSORIES



A - Earth Bonding Strap



B - Conduit Clamps - PVC



C - Cable Retainer



D - Cable Tray Fixing Ties



E - Cable Tie Mounts



F - Cable Ties - SS



G - Cable Clamps



H - Wire Saddle



J - Cable Clamps - Steel



K - Threader Rods



L - Anchor Bolts

# TECHNICAL SPECIFICATIONS

## 1. Independent Laboratory Tests

AXEL Cable Trays and Ladders are tested at UKAS accredited laboratory in the UK

- 1. Salt spray test
- 2. Safe work load test

		Test Report Number 9425-1 Issue 1 Date of Issue: 29/10/2018 Reason for Re-issue: N/A Page 1 of 7	Salt Mist Testing (ISO 9000) AXEL Cable Tray Limited circulation only Commercial in Confidence
Date Samples Arrived: 20/08/2018 Date Testing Started: 30/08/2018 Date Testing Completed: 14/09/2018 Customer Purchase Order No: Pro-Forma	Customer Name and Address: AP LANKA (PVT) LTD No 163/26, Nawala Road, Colombo - 05, Sri Lanka	Description of Test Samples: 1 no. Cable Tray Identified as '1' for testing purposes Test(s) Performed in the following order unless otherwise specified: Salt Mist Testing In Accordance With: UKAS ASTM B117-16	
<b>Report Summary:</b> The sample content was subjected to the test detailed above, the particulars and methodology of which are contained in this test report. On 10/09/2018 the chamber was opened for a period of 1 hour for sample checks and checking of the spray assembly. It was agreed with the customer via email that the test duration would be extended by 1 hour to compensate for this. Apart from the deviation noted above the test completed correctly. Some discoloration was noted on 20/08/2018 after 8 days of salt exposure and further discoloration was noted the following day (30/08/2018), particularly around cut-out sections on the cable tray. The customer requested that the test samples were disposed of on conclusion of the test.			
Distribution: 1. PARC Ltd File 2. AP LANKA (PVT) LTD	Test Engineer: Shaun Humphrey	Digitally signed by Shaun Humphrey Date: 2018.10.29 09:58:12	Approved by: Sam Wirt, Senior Test Engineer

**Salt Spray Test (Corrosion Resistance Test) 600hrs**  
 In accordance with ASTM B 117-16 Standards  
 Cable Tray HDGA

		Test Report Number 9425-1 Issue 1 Date of Issue: 29/10/2018 Reason for Re-issue: N/A Page 1 of 7	Salt Mist Testing (ISO 9000) AXEL Cable Ladder Limited circulation only Commercial in Confidence
Date Samples Arrived: 20/08/2018 Date Testing Started: 30/08/2018 Date Testing Completed: 14/09/2018 Customer Purchase Order No: Pro-Forma	Customer Name and Address: AP LANKA (PVT) LTD No 163/26, Nawala Road, Colombo - 05, Sri Lanka	Description of Test Samples: 1 no. Cable Ladder Identified as '2' for testing purposes Test(s) Performed in the following order unless otherwise specified: Salt Mist Testing In Accordance With: UKAS ASTM B117-16	
<b>Report Summary:</b> The sample content was subjected to the test detailed above, the particulars and methodology of which are contained in this test report. On 10/09/2018 the chamber was opened for a period of 1 hour for sample checks and checking of the spray assembly. It was agreed with the customer via email that the test duration would be extended by 1 hour to compensate for this. Apart from the deviation noted above the test completed correctly. Some discoloration was noted on 29/08/2018 after 8 days of salt exposure and further discoloration was noted the following day (30/08/2018), particularly around screw heads on the cable ladder. The customer requested that the test samples were disposed of on conclusion of the test.			
Distribution: 1. PARC Ltd File 2. AP LANKA (PVT) LTD	Test Engineer: Shaun Humphrey	Digitally signed by Shaun Humphrey Date: 2018.10.29 09:58:12	Approved by: Sam Wirt, Senior Test Engineer

**Salt Spray Test (Corrosion Resistance Test) 600hrs**  
 In accordance with ASTM B 117-16 Standards  
 Cable Ladder HDGA

		Test Report Number 9425-1 Issue 1 Date of Issue: 07/02/2019 Reason for Re-issue: N/A Page 1 of 7	Salt Mist Testing (ISO 9000) AXEL Cable Tray - EG Powder Coated Limited circulation only Commercial in Confidence
Date Samples Arrived: 22/01/2019 Date Testing Started: 22/01/2019 Date Testing Completed: 25/02/2019 Customer Purchase Order No: Pro-Forma	Customer Name and Address: AP LANKA (PVT) LTD No 163/26, Nawala Road, Colombo 5, Sri Lanka	Description of Test Samples: AXEL Cable Tray - EG Powder Coated Identified as test sample 1 for test DFP0955 Test(s) Performed in the following order unless otherwise specified: Salt Mist Testing In Accordance With: UKAS ASTM B117-16	
<b>Report Summary:</b> The sample content was subjected to the test detailed above, the particulars and methodology of which are contained in this test report. The testing completed correctly. On completion of the salt mist test the test sample was disposed of at the customer's request.			
Distribution: 1. PARC Ltd File 2. AP LANKA (PVT) LTD	Test Engineer: Shaun Humphrey	Digitally signed by Shaun Humphrey Date: 2019.02.27 14:37:17	Approved by: Sam Wirt, Senior Test Engineer

**Salt Spray Test (Corrosion Resistance Test) 200hrs**  
 In accordance with ASTM B 117-16 Standards  
 Cable Tray EG

		Test Report Number 9425-2A Issue 1 Date of Issue: 26/02/2019 Reason for Re-issue: N/A Page 1 of 8	Safe Working Load (SWL) Testing AXEL Cable Tray 300mm x 400mm x 1.5mm Limited circulation only Commercial in Confidence
Date Samples Arrived: 15/01/2019 Date Testing Started: 21/01/2019 Date Testing Completed: 24/01/2019 Customer Purchase Order No: Pro-Forma	Customer Name and Address: AP LANKA (PVT) LTD No 163/26, Nawala Road, Colombo - 05, Sri Lanka	Description of Test Samples: AXEL Cable Tray 300mmx400mmx1.5mm, Steel thickness 1.5mm Identified as 'Sample 1' Test Performed in the following order unless otherwise specified: SWL Test In accordance with customer email dated 04/07/18 and 21/01/2019, broadly in accordance IEC 61537:2006	
<b>Report Summary:</b> The sample content was subjected to the test detailed above, the particulars and methodology of which are contained in this test report. Load test deflections recorded during testing are listed below: Sample 1 Cable Tray 120kg Load applied Deflection at point A = 0.24mm Deflection at point B = 1.44mm 360kg Load applied Deflection at point A = 0.7mm Deflection at point B = 2.02mm 104kg Load applied Deflection at point A = 2.31mm Deflection at point B = 3.24mm			
Distribution: 1. PARC Ltd File 2. AP LANKA (PVT) LTD	Test Engineer: Stephen Hutching	Digitally signed by Stephen Hutching Date: 2019.02.26 10:58:01	Approved by: Nick Fishwick, Senior Project Engineer

**Safe Work Load (SWL) Test**  
 In accordance with IEC 61537:2006 Standards  
 Cable Tray

		Test Report Number 9425-2B Issue 1 Date of Issue: 26/02/2019 Reason for Re-issue: N/A Page 1 of 8	Safe Working Load (SWL) Testing AXEL Cable Ladder 300mm x 200mm x 1.5mm Limited circulation only Commercial in Confidence
Date Samples Arrived: 15/01/2019 Date Testing Started: 21/01/2019 Date Testing Completed: 24/01/2019 Customer Purchase Order No: Pro-Forma	Customer Name and Address: AP LANKA (PVT) LTD No 163/26, Nawala Road, Colombo - 05, Sri Lanka	Description of Test Samples: AXEL Cable Ladder 300mmx200mm, Steel thickness 1.5mm Identified as 'Sample 2' Test Performed in the following order unless otherwise specified: SWL Test In accordance with customer email dated 04/07/18 and 21/01/2019, broadly in accordance IEC 61537:2006	
<b>Report Summary:</b> The sample content was subjected to the test detailed above, the particulars and methodology of which are contained in this test report. The load test deflections recorded during testing are listed below: Sample 2 Cable Ladder 120kg Load applied Deflection at point A = 0.36mm Deflection at point B = 0.54mm 360kg Load applied Deflection at point A = 1.06mm Deflection at point B = 1.70mm 406kg Load applied Deflection at point A = 4.14mm Deflection at point B = 2.37mm 104kg Load applied Deflection at point A = 4.14mm Deflection at point B = 8.67mm			
Distribution: 1. PARC Ltd File 2. AP LANKA (PVT) LTD	Test Engineer: Stephen Hutching	Digitally signed by Stephen Hutching Date: 2019.02.26 10:58:01	Approved by: Nick Fishwick, Senior Project Engineer

**Safe Work Load (SWL) Test**  
 In accordance with IEC 61537:2006 Standards  
 Cable Ladder



# TECHNICAL SPECIFICATIONS

## 2. Conform to BS EN ISO 61537 Standard

AXEL cable tray & ladder system, components and accessories are designed and manufactured conform with the BS EN ISO 61537:2002 (Cable tray systems and cable ladder systems for cable management)

### Reference Standards

The following is a list of the standards relating to cable management products which refer to the design & manufacture of the AXEL cable tray & ladder system.

BS 6946:1988	Specification for metal channel cable support systems for electrical installations.
BS EN 50085-1:1999	Cable trunking and cable ducting systems for electrical installations. General requirements (formerly BS 4678 Part 1)
BS EN 61537:2002	Cable tray systems & cable ladder systems for cable management.
IEC 61537:2001	Cable tray systems & cable ladder systems for cable management.
NEMA VE 1-1998 Metal	Cable Tray Systems (also CSA International C22.2 No 126.1-98).
NEMA VE 2-2000	Cable Tray Installation Guidelines.

## 3. Electromagnetic Compatibility (EMC)

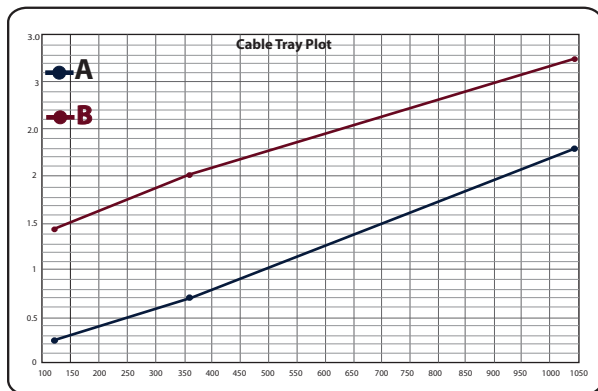
In general, using AXEL cable tray & ladder system can be considered to be passive in respect of electromagnetic influences, emission and immunity. When AXEL cable ladder is installed as a part of a wiring installation, the installation may emit or may be influenced by electromagnetic signals. The degree of influence will depend on the nature of the installation within its operating environment and the electrical equipment connected by the wiring. As a minimum precaution to minimize the occurrence of electromagnetic influences, Power and data/signal cables should be run on separate cable routings or separated by means of AXEL dividing fillets.

## 4. Electrical Continuity Characteristics

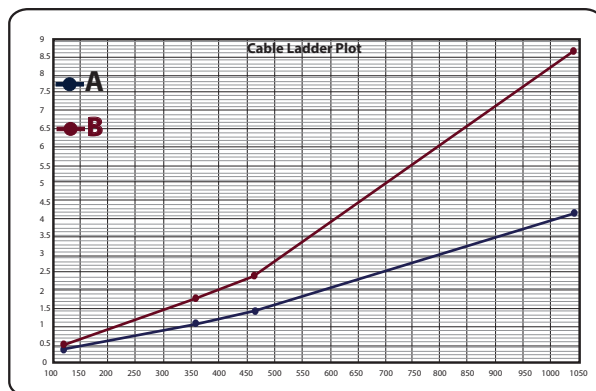
In tests conducted to verify the electrical continuity characteristics of the AXEL cable tray & ladder system, it has been established that the standard AXEL coupling system which provides adequate electrical continuity, ensuring equipotential bonding and connection to earth.

The AXEL cable ladder system has been manufactured for electrical continuity to BS EN 61537:2002. Earth continuity bonding straps of cross sectional area 16mm<sup>2</sup> are available for use with AXEL cable ladder where a non-conductive surface, finish i.e. epoxy coated etc, has been specified or where the installation requires an additional means of bonding.

## 5. Load Deflection



Cable Tray



Cable Ladder

## 6. Material Specification

Product	Materials & Finishes	Material Thickness
Cable Trays - X series	EG or HDGA sheet metal and painted	1.0mm - 1.5mm
Cable Tray - STD series	EG or HDGA sheet metal and painted	1.0mm - 1.5mm
Cable Ladders	EG or HDGA sheet metal and painted	1.5mm - 2.0mm
Cable Trunkings	EG or HDGA sheet metal and painted	0.6mm - 0.8mm
Floor Trunkings	Al/Zn or HDGA sheet metal and unpainted or painted	Base 1.0mm - 1.5mm, cover 1.0mm - 2.0mm
Support System	EG or HDGA sheet metal and painted	1.5mm or 2.0mm
Covers	EG or HDGA sheet metal and painted	1.0mm - 1.2mm

## 7. Paint Specifications

Color - RAL 9006 or RAL 7032 or any other color on request

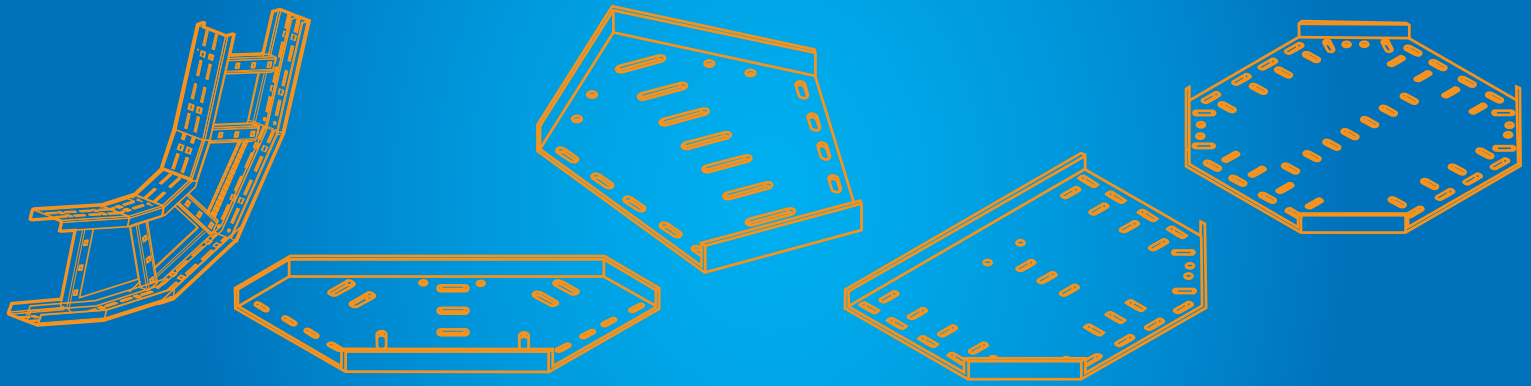
Type - Epoxy polyester powder

Gloss Level - Semi Gloss 50-70%

Coating Thickness - 60-80µm, Stoved at 180°C

Per-Treatment - High pressure spray of water and phosphating chemicals for de-greasing, de-rusting and phosphating.

Per - heating & curing - Electrical IR (Infra Red) heaters.



[www.cablemanagements.com](http://www.cablemanagements.com)  
Cable Management Systems



**Cable Trays | Cable Ladders | Cable Trunkings | Floor Trunkings**

Corporate office - 163/26, Nawala Road, Colombo-05, Sri Lanka.

email: [sales@cablemanagements.com](mailto:sales@cablemanagements.com)

Sole Distributor in Sri Lanka



East Link Engineering Co (Ovt) Ltd.  
163/26, Nawala Road, Colombo 05, Sri Lanka.  
E-mail : [sales@eastlink.lk](mailto:sales@eastlink.lk)  
Web : [www.eastlink.lk](http://www.eastlink.lk)



All Illustrations, drawing and descriptive matter in this publication are of a generally informative nature only and do not form part of the specification or description of the goods.

All dimensions shown are nominal. AXEL reserves the right to make, without notice, such modifications in specifications, design, materials or finishes as it Copyright, intellectual property and drawings remain the property of AXEL and must not be reproduced, without prior approval.

© Copyright of AXEL



AXEL Cable Management Products.

[www.cablemanagements.com](http://www.cablemanagements.com)